



How to ingest SQL Server Data into QlickView

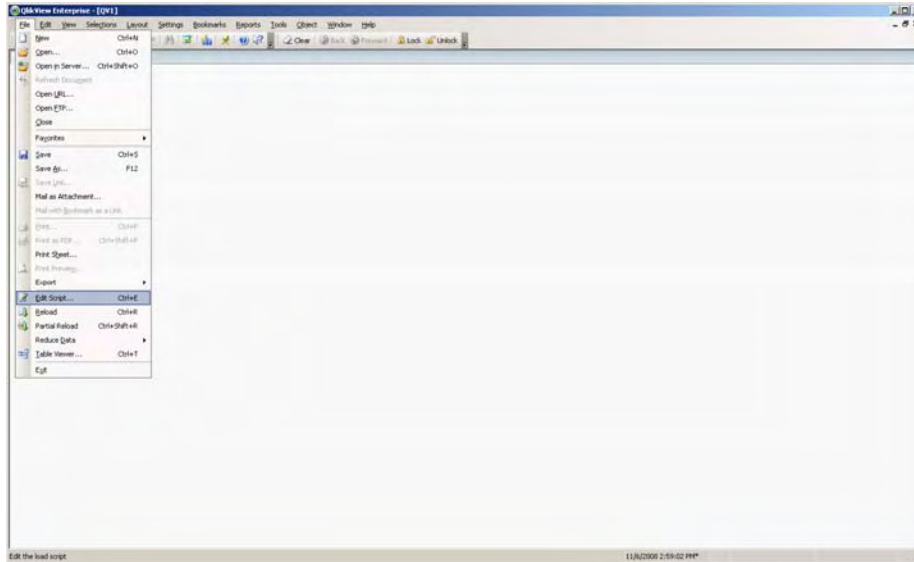
[www. SherlockInformatics.com](http://www.SherlockInformatics.com)

Enabling the agile organization

Open up QlikView. Create a new project.

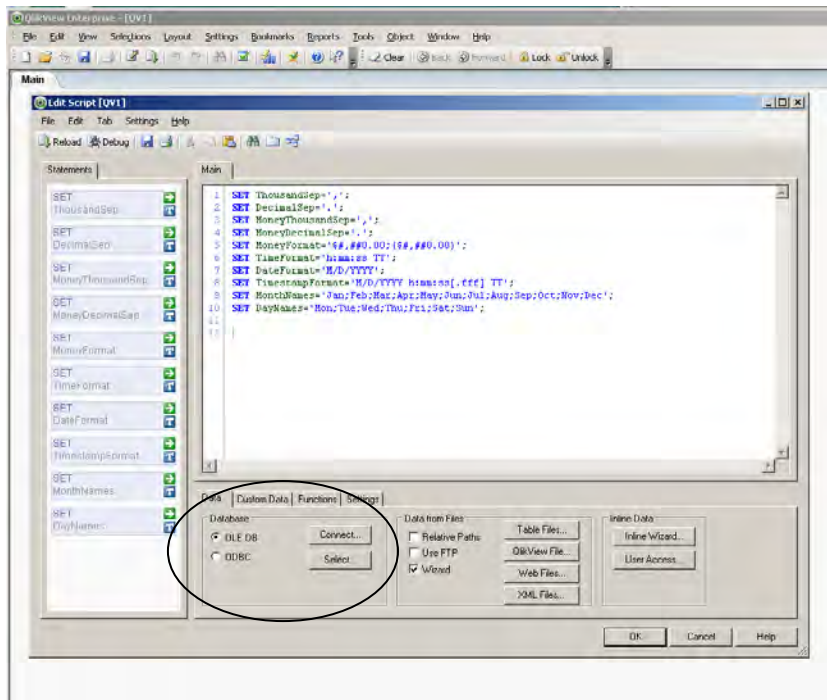
When you first create a QlikView project you need to tell it how to get data. This is done by creating a loading script:

1) File-> Edit Script brings you to the script creation and editing menu.

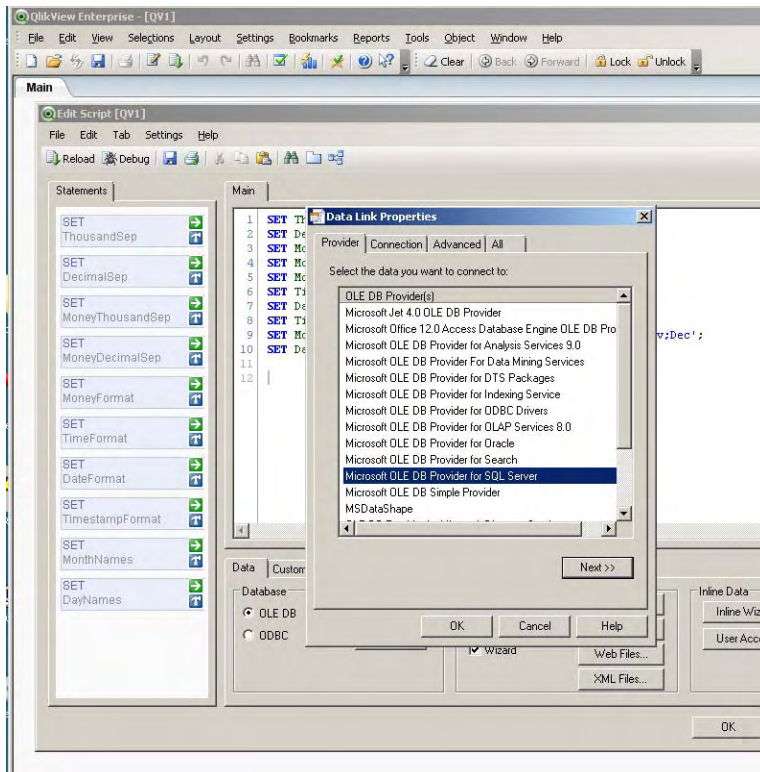


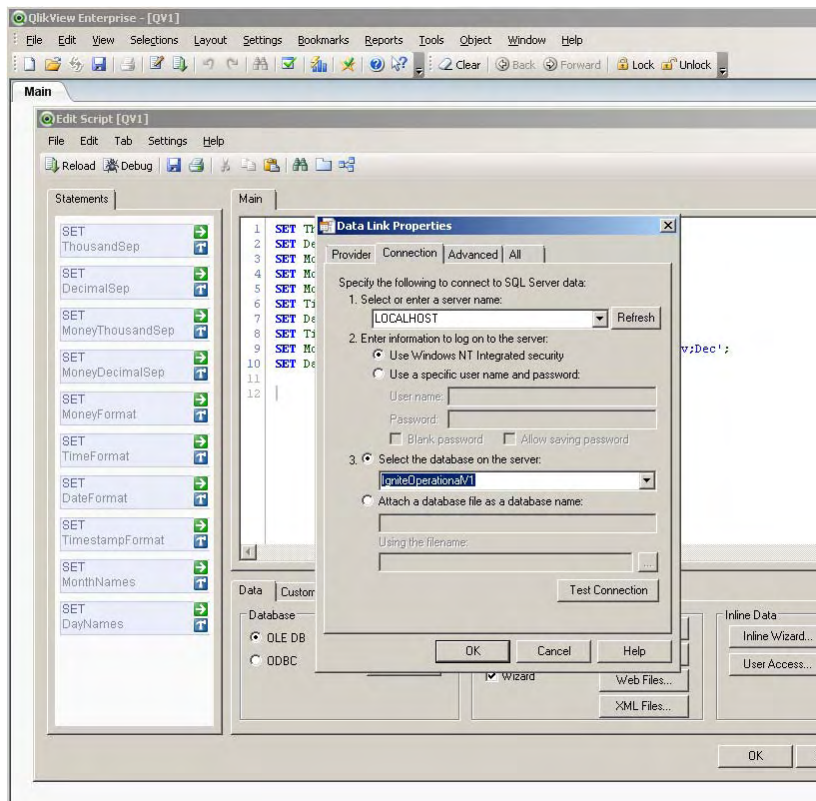
2) A script menu pops up. This is the tool you use to create and maintain import scripts.

3) For SQL Server you want to use the OLE DB option

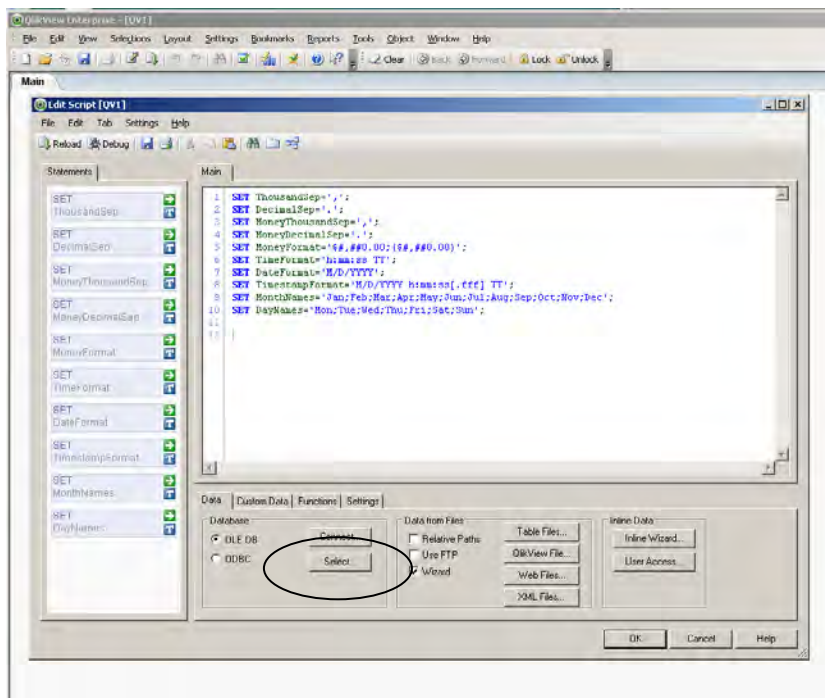


4) Go through the Windows DB connection wizard to connect to your database.

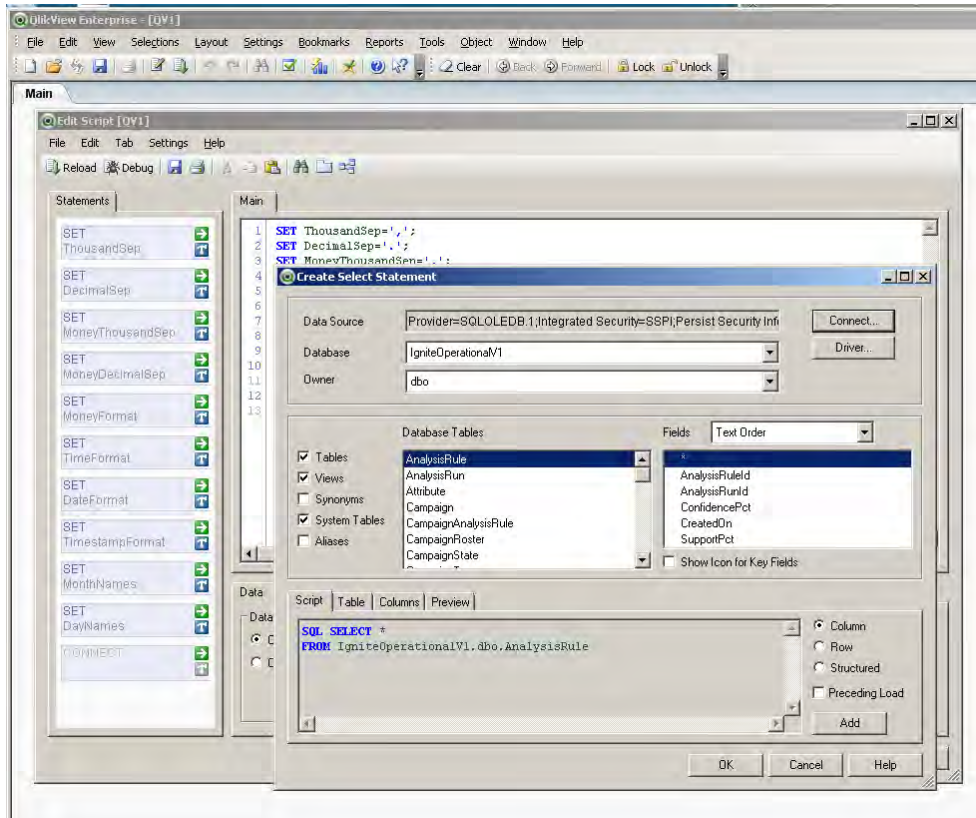




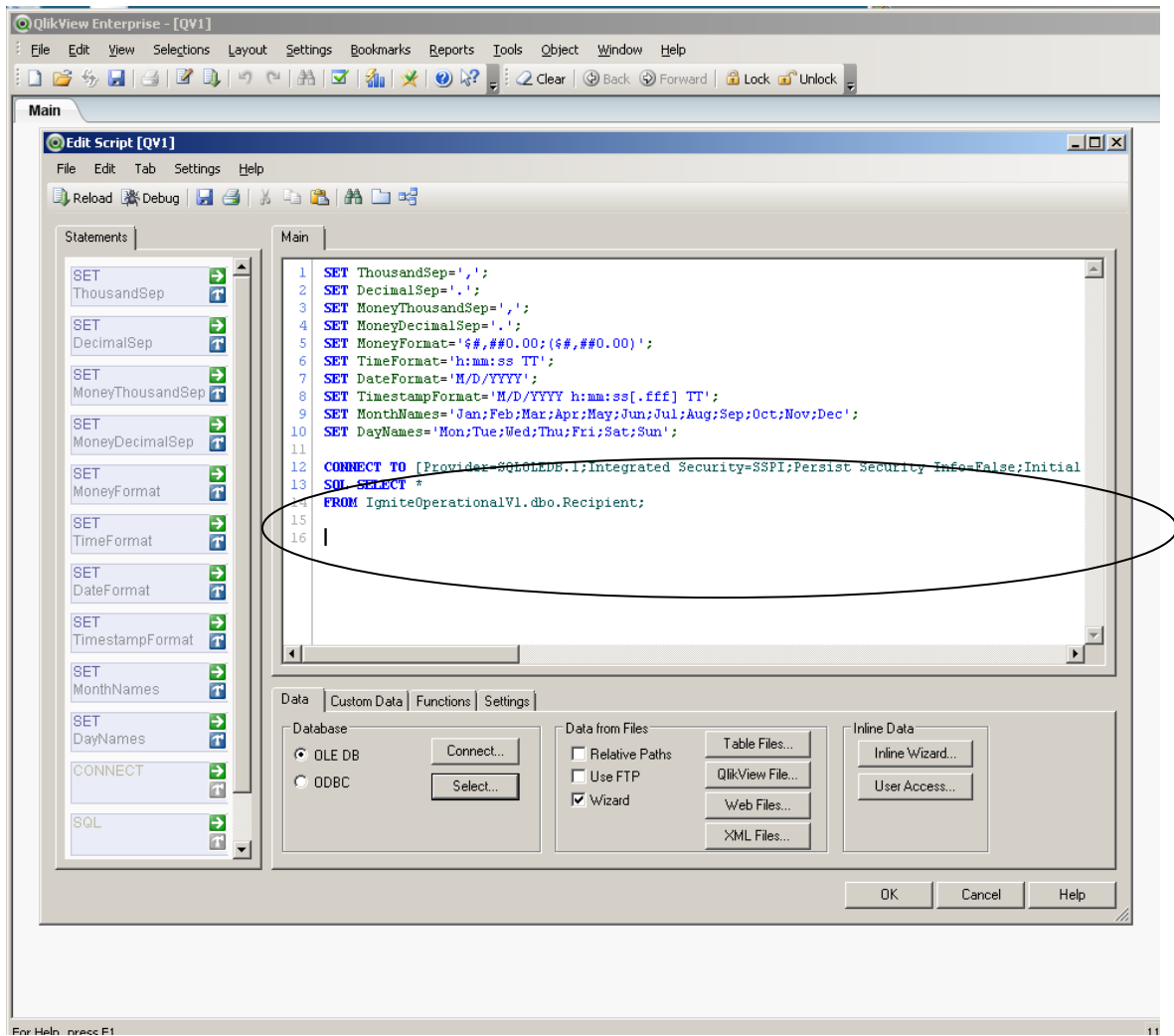
5) Once you were able to connect press the Select button to choose which tables/views to get data from.



6) This window just helps you create a select query.



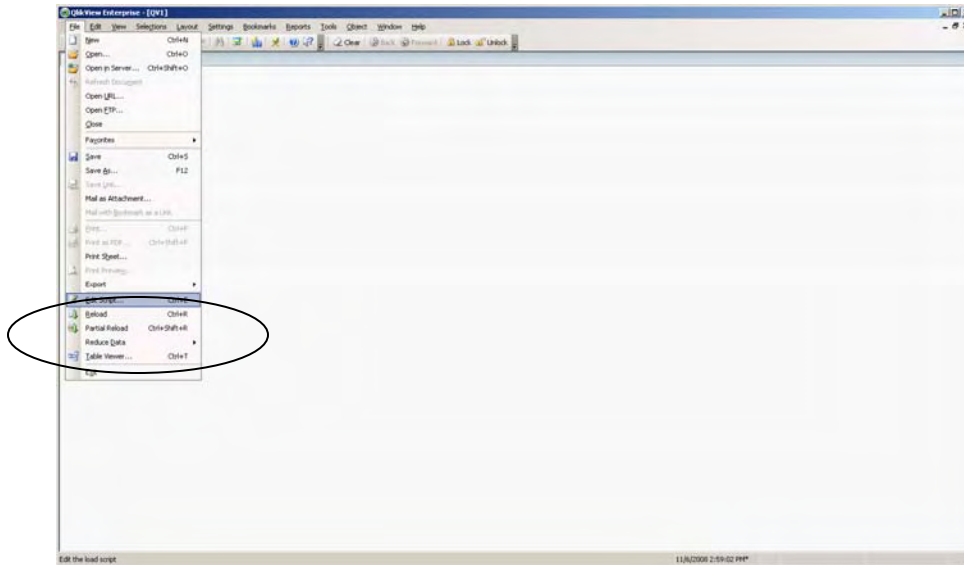
7) Once you are done you will see the results in the script area:



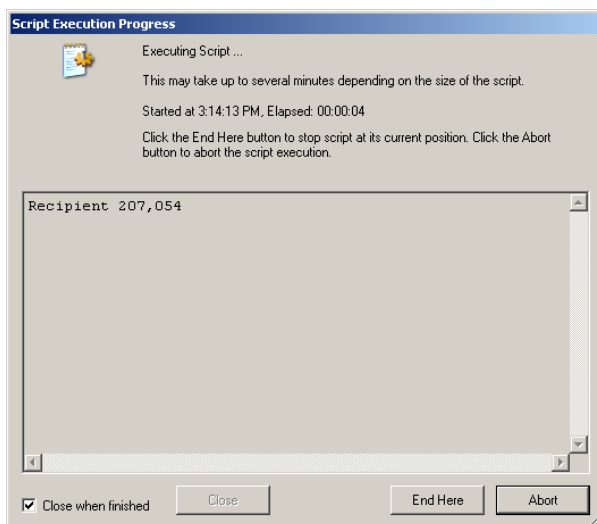
8) Hit Ok. Then, when you want to load the data use the load data option:

File menu: Reload – Load all data using the script

Partial Reload -- Load a selected number of rows.



9) If everything works out you will see a window describing the loading process:



10) Then you are ready to start creating dashboards and analysis tools!